




EST122

PEDESTRIAN STACKER 1.2T

 1200 kg  3013 mm  24 V AGM



The EST122 is ideal for warehouses, shops, and distribution centers handling low-to-medium intensity stacking tasks. Thanks to its compact size and small turning radius (1458 mm), it navigates easily in confined spaces. Equipped with a crawl speed button for precise control and an ergonomic tiller design, it supports operators in safe and comfortable material handling.

SPECIFICATION	REF	UNIT	VALUE
Battery type			AGM
Battery nominal capacity K5		Ah	85
Battery voltage		V	24
Rated capacity	Q	kg	1200
Load centre distance	c	mm	600
Service weight		kg	590
Height, mast lowered	h_1	mm	2104
Lift	h_3	mm	2930
Height, mast extended	h_4	mm	3532
Overall length	l_1	mm	1715
Overall width	b_1/b_2	mm	792
Length to face of forks	l_2	mm	565
Fork dimensions	s/e/l	mm	60/170/1150
Turning radius	wa	mm	1464
Manufacturer			EP
Model designation			EST122

Features

Strong and stable chassis

The EST122 features a reinforced chassis with side beams and plates, reducing stress and deformation under load. This design ensures a longer service life and dependable stability during daily stacking tasks.



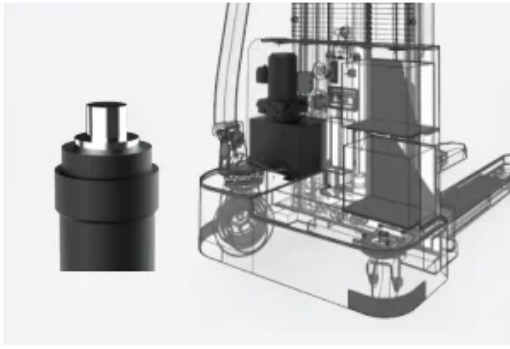
Rigid duplex mast

Its rigid mast, built with a beam structure, enhances lifting stability and allows smooth stacking up to 2430 mm. Operators benefit from consistent performance even in demanding cycles.

Easy and precise operation

Equipped with an extra-long offset tiller and crawl speed button, the stacker provides improved visibility and nimble maneuverability. These features allow safe and precise operation in narrow aisles and confined workspaces.





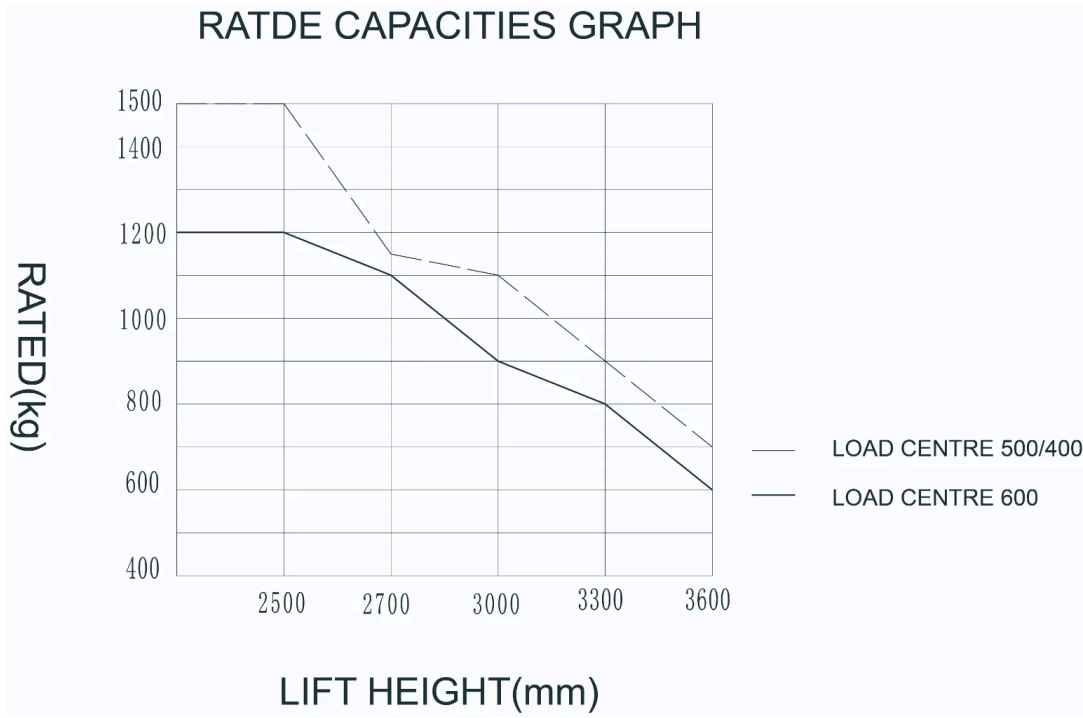
Efficient hydraulic system

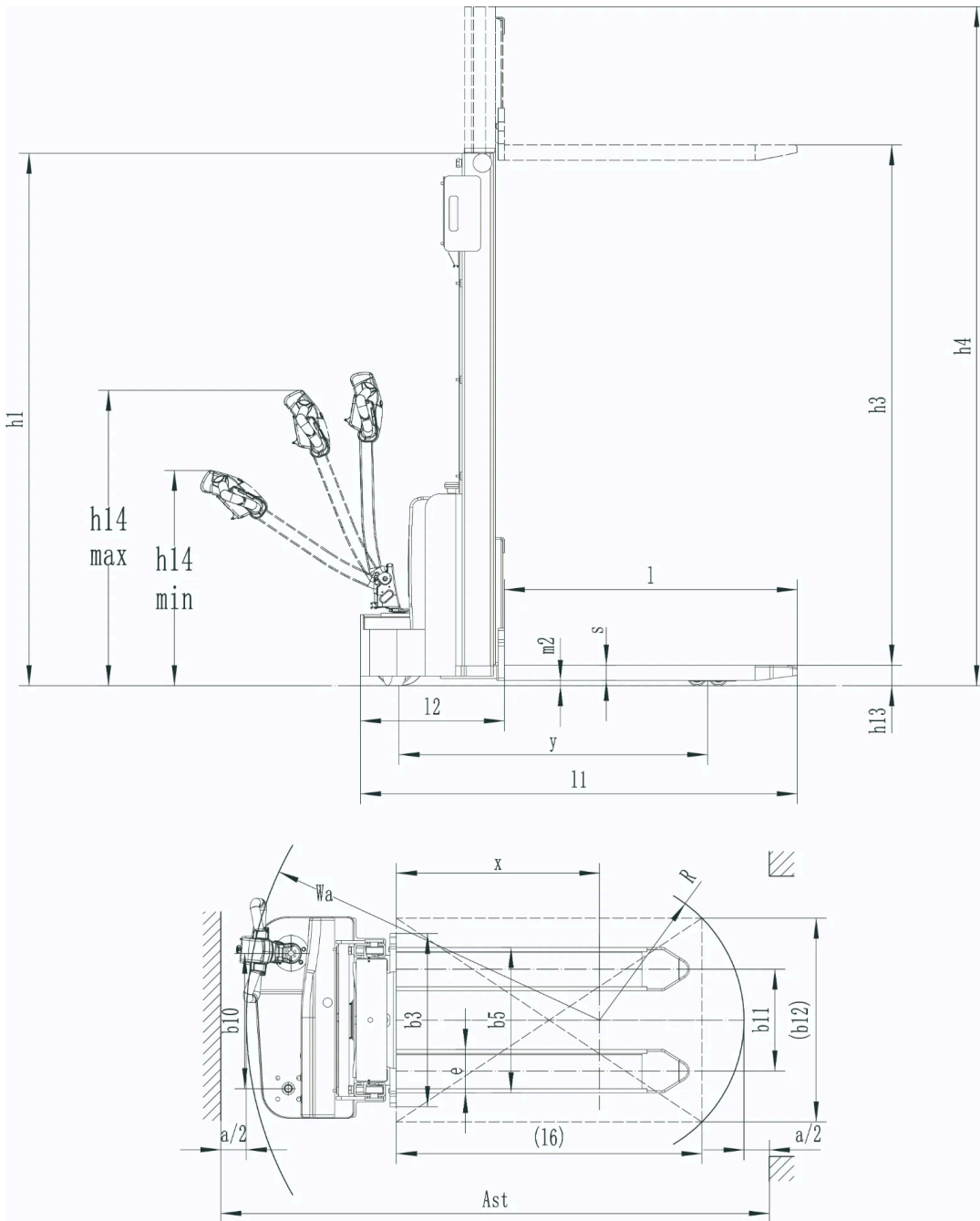
The high-quality hydraulic pump reduces noise while ensuring high efficiency and durability. Shortened lifting times improve overall productivity in daily operations.

VDI Chart

	SPECIFICATION	REF	UNIT	VALUE
1.1	Manufacturer			EP
1.2	Model designation			EST122
1.3	Drive			Electric
1.4	Operator type			Pedestrian
1.5	Rated capacity	Q	kg	1200
1.6	Load centre distance	c	mm	600
1.8	Load distance, centre of drive axle to fork	x	mm	798
1.9	Wheelbase	y	mm	1212
2.1	Service weight		kg	590
2.2	Axle loading, laden front/rear		kg	650/1140
2.3	Axle loading, unladen front/rear		kg	450/140
3.1	Tyres			Polyurethane
3.2	Tyre size, front		mm	Ø210×70
3.3	Tyre size, rear		mm	Ø74×72
3.4	Additional wheels (castor wheels)		mm	Ø130×55
3.5	Wheels, number front/rear (x=drive wheels)			1x , 1/4
3.6	Tread width, front	b ₁₀	mm	531
3.7	Tread width, rear	b ₁₁	mm	405
4.2	Height, mast lowered	h ₁	mm	2104
4.4	Lift	h ₃	mm	2930
4.5	Height, mast extended	h ₄	mm	3532
4.9	Height drawbar in driving position min./max.	h ₁₄	mm	760/1140
4.15	Height, lowered	h ₁₃	mm	90
4.19	Overall length	l ₁	mm	1715

SPECIFICATION		REF	UNIT	VALUE
4.20	Length to face of forks	l_2	mm	565
4.21	Overall width	b_1/b_2	mm	792
4.22	Fork dimensions	s/e/l	mm	60/170/1150
4.24	Fork carriage width		mm	680
4.25	Distance between fork-arms	b_5	mm	570
4.32	Ground clearance, centre of wheelbase	m_2	mm	23
4.34.1	Aisle width for pallets 1000×1200 crossways	Ast	mm	2296
4.34.2	Aisle width for pallets 800 × 1200 lengthways	Ast	mm	2230
4.35	Turning radius	Wa	mm	1464
5.1	Travel speed, laden/unladen		km/h	4.2/4.5
5.2	Lift speed, laden/unladen		m/s	0.09/0.13
5.3	Lowering speed, laden/unladen		m/s	0.10/0.085
5.8	Max. gradeability, laden/unladen		%	3/10
5.10	Service brake			Electromagnetic
5.11	Parking brake			Electromagnetic
6.1	Drive motor rating S2 60 min		kW	0.75
6.2	Lift motor rating at S3 15%		kW	2.2
6.4	Battery nominal capacity K5		Ah	85
6.4	Battery voltage		V	24
6.4.1	Battery type			AGM
6.5	Battery weight		kg	47
6.6	Energy consumption according to DIN EN 16796		kWh/h	0.62 ¹⁾
6.7	Turnover output according to VDI 2198			31.2
6.8	Turnover efficiency according to VDI 2198			55.12
8.1	Type of drive unit			DC
10.5	Steering design			Mechanical
10.7	Sound pressure level at the driver's seat		dB(A)	74
15.1	Charger output current		A	10





Mast Options

MAST TYPE	LIFT HEIGHT (H3, MM)	MAST LOWERED HEIGHT (H1, MM)	MAST EXTENDED HEIGHT, NO BACKREST (H4, MM)	MAST EXTENDED HEIGHT, WITH BACKREST (H4, MM)
2 Standard Mast	2513	1817	-	3032
2 Standard Mast	2713	1917	-	3032
2 Standard Mast	3013	2067	-	3532
2 Standard Mast	3313	2217	-	3832
2 Standard Mast	3613	2367	-	4132

Options

ITEM	OPTIONS (optional items marked in yellow)
Drive wheel material	PU wheel with Pattern
Battery capacity	85Ah/105Ah China
Pump Motor	2.2Kw, DC China
Traction Motor	0.75Kw DC China