



# ESL122

## PEDESTRIAN STACKER 1.2T

1200 kg 3013 mm 24 V Li-Ion



The ESL122 is designed for light-duty stacking in retail, warehouses, and distribution centers. Its compact design and crawl speed button make it highly effective in confined spaces. The strong chassis and rigid mast ensure safe operation, while the Li-ion battery system provides consistent uptime and quick recharging for daily workflows.

SPECIFICATION	REF	UNIT	VALUE
Battery type			Li-Ion
Battery nominal capacity K5		Ah	100
Battery voltage		V	24
Rated capacity	Q	kg	1200
Load centre distance	c	mm	600
Service weight		kg	570
Height, mast lowered	$h_1$	mm	2104
Lift	$h_3$	mm	2930
Height, mast extended	$h_4$	mm	3532
Overall length	$l_1$	mm	1715
Overall width	$b_1/b_2$	mm	792
Length to face of forks	$l_2$	mm	565
Fork dimensions	s/e/l	mm	60/170/1150
Turning radius	Wa	mm	1464
Manufacturer			EP
Model designation			ESL122

# Features

---

## Reinforced and stable chassis

Built with side impact beams, plates, and boxes, the ESL122 chassis resists deformation from heavy loads, ensuring long-term durability and safe stacking operations.



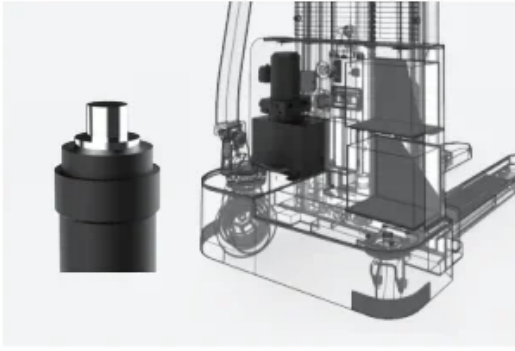
## Rigid duplex mast

The beam-structured mast provides rigidity and smooth lifting up to 2930 mm. Its strength ensures stability and performance even in repetitive light-duty cycles.



## Easy and precise operation

The extra-long offset tiller with crawl speed button enhances operator visibility and maneuverability. This makes the ESL122 ideal for safe handling in narrow aisles and tight warehouse layouts.



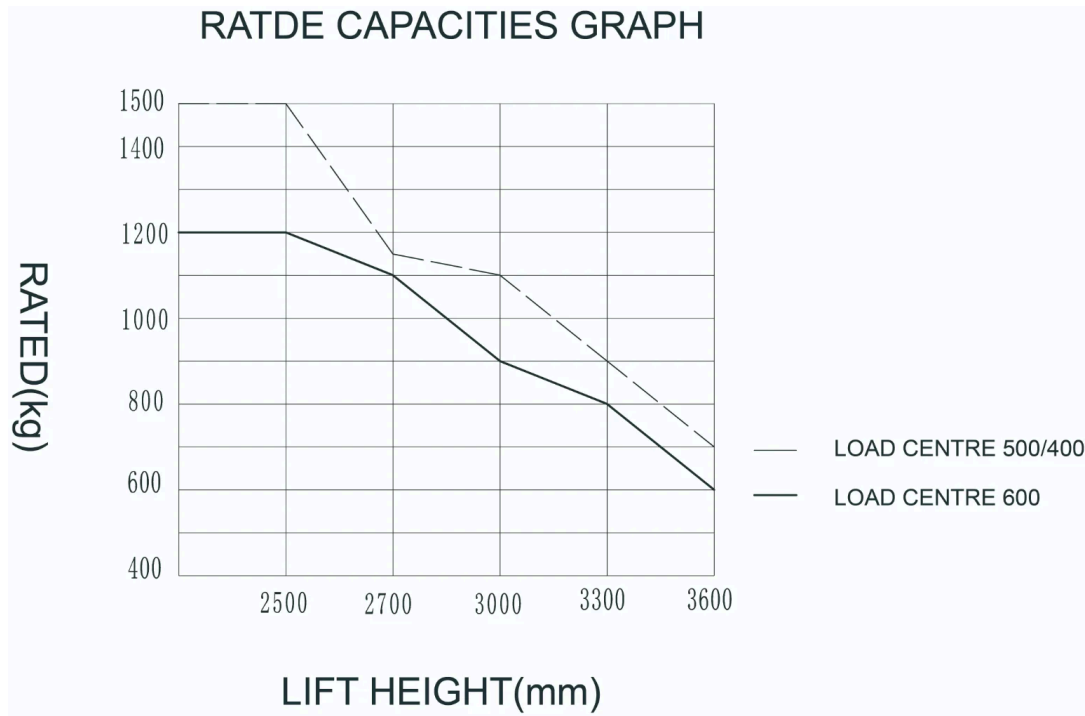
## Efficient hydraulic system

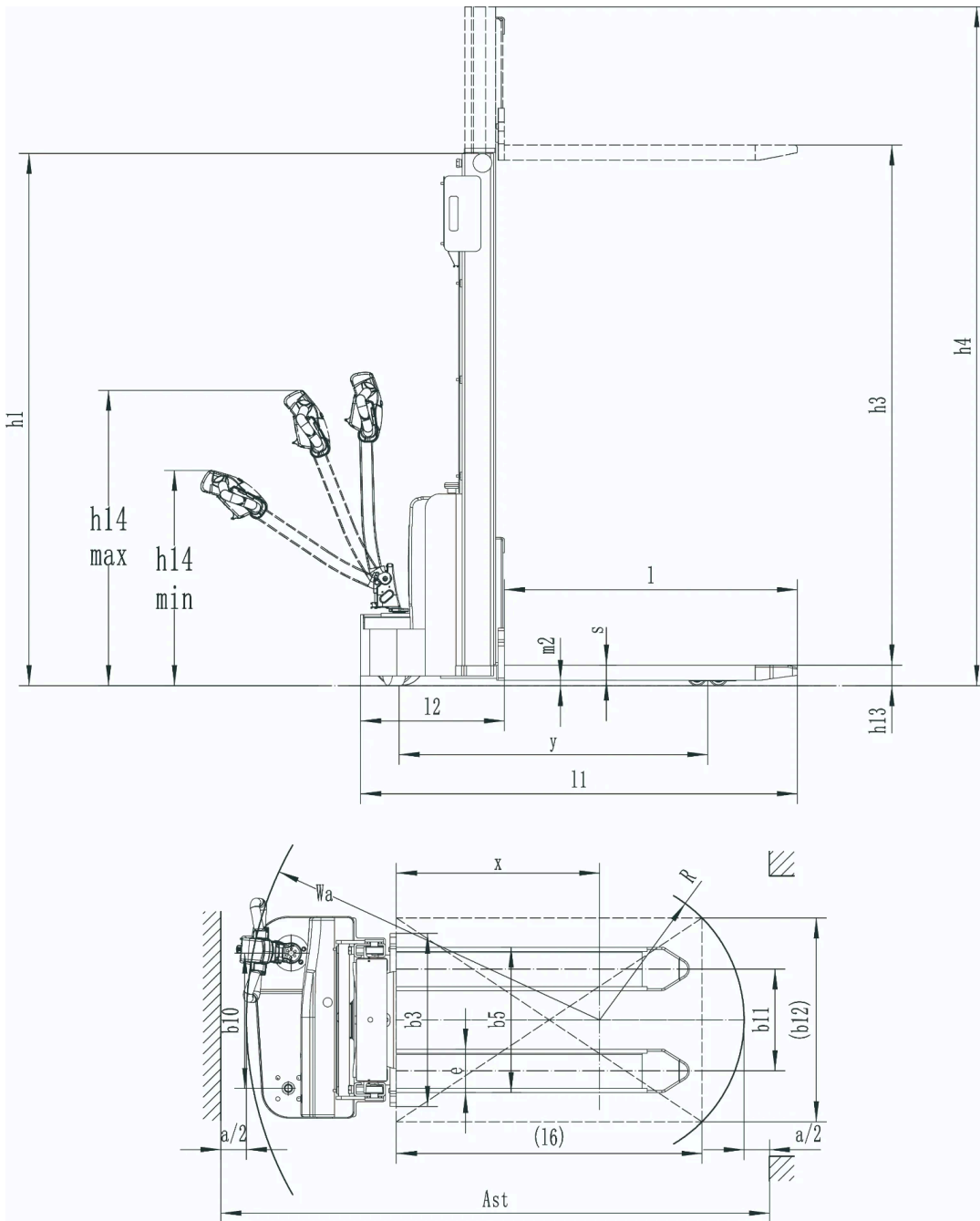
A high-quality hydraulic pump reduces noise, improves lifting efficiency, and shortens cycle times. This ensures both operator comfort and consistent productivity.

## VDI Chart

	SPECIFICATION	REF	UNIT	VALUE
1.1	Manufacturer			EP
1.2	Model designation			ESL122
1.3	Drive			Electric
1.5	Rated capacity	Q	kg	1200
1.6	Load centre distance	c	mm	600
1.8	Load distance, centre of drive axle to fork	x	mm	798
1.9	Wheelbase	y	mm	1212
2.1	Service weight		kg	570
2.2	Axle loading, laden front/rear		kg	635/1135
2.3	Axle loading, unladen front/rear		kg	435/135
3.1	Tyres			Polyurethane
3.2	Tyre size, front		mm	Ø210×70
3.3	Tyre size, rear		mm	Ø74×72
3.4	Additional wheels (castor wheels)		mm	Ø130×55
3.5	Wheels, number front/rear (x=drive wheels)			1x , 1/4
3.6	Tread width, front	b <sub>10</sub>	mm	531
3.7	Tread width, rear	b <sub>11</sub>	mm	405
4.2	Height, mast lowered	h <sub>1</sub>	mm	2104
4.4	Lift	h <sub>3</sub>	mm	2930
4.5	Height, mast extended	h <sub>4</sub>	mm	3532
4.9	Height drawbar in driving position min./max.	h <sub>14</sub>	mm	760/1140
4.15	Height, lowered	h <sub>13</sub>	mm	90
4.19	Overall length	l <sub>1</sub>	mm	1715
4.20	Length to face of forks	l <sub>2</sub>	mm	565

SPECIFICATION		REF	UNIT	VALUE
4.21	Overall width	b <sub>1</sub> /b <sub>2</sub>	mm	792
4.22	Fork dimensions	s/e/l	mm	60/170/1150
4.24	Fork carriage width		mm	680
4.25	Distance between fork-arms	b <sub>5</sub>	mm	570
4.32	Ground clearance, centre of wheelbase	m <sub>2</sub>	mm	23
4.34.1	Aisle width for pallets 1000×1200 crossways	Ast	mm	2296
4.34.2	Aisle width for pallets 800 × 1200 lengthways	Ast	mm	2230
4.35	Turning radius	wa	mm	1464
5.1	Travel speed, laden/unladen		km/h	4.2/4.5
5.2	Lift speed, laden/unladen		m/s	0.09/0.013
5.3	Lowering speed, laden/unladen		m/s	0.10/0.085
5.8	Max. gradeability, laden/unladen		%	3/10
5.10	Service brake			Electromagnetic
6.1	Drive motor rating S2 60 min		kW	0.75
6.4	Battery nominal capacity K5		Ah	100
6.4	Battery voltage		V	24
6.4.1	Battery type			Li-Ion
6.5	Battery weight		kg	28
6.6	Energy consumption according to DIN EN 16796		kWh/h	0.62
6.7	Turnover output according to VDI 2198			31.2
6.8	Turnover efficiency according to VDI 2198			55.12
8.1	Type of drive unit			DC
10.5	Steering design			Mechanical
10.7	Sound pressure level at the driver's seat		dB(A)	74
15.1	Charger output current		A	30





## Mast Options

MAST TYPE	LIFT HEIGHT (H3, MM)	MAST LOWERED HEIGHT (H1, MM)	MAST EXTENDED HEIGHT, NO BACKREST (H4, MM)
2-Standard Mast	2513	1817	3032
2-Standard Mast	2713	1917	3232
2-Standard Mast	3013	2067	3532
2-Standard Mast	3313	2217	3832
2-Standard Mast	3613	2367	4132

# Options

ITEM	OPTIONS (optional items marked in yellow)
Fork dimension	570*1150   685*1150   570*1000   685*1000   570*1220   685*1220
Fork carriage width option	680mm   795mm
Load wheel type	Dual wheels
Load wheel material	Pu
Drive wheel material	PU
Charger	24V-30Ah internal
Battery display indicator (BDI)	With hourmeter
Handle head type	ET big handle head
Castor wheels	Yes and not customized