



EQA151

ELECTRIC STACKER

1500 kg 2490 mm 48 V Lead Acid/Li-ion



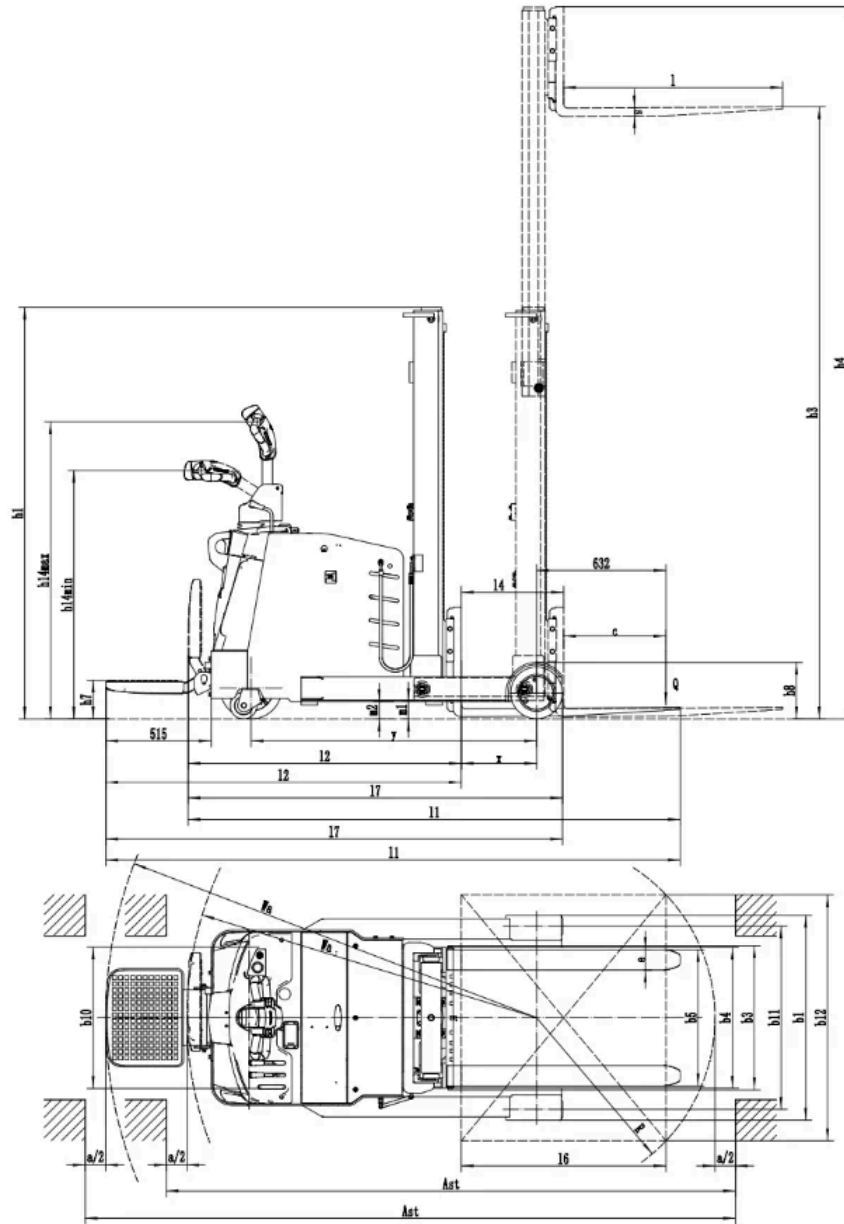
The EQA151 is specifically engineered for high-density storage operations in confined spaces and narrow aisles. Its lightweight and compact design allows for exceptional maneuverability in tight warehouse grids and retail backrooms. With high ground clearance and large PU load wheels, this stacker navigates uneven floors and ramps smoothly. It is the ideal solution for stacking various pallet types in logistics centers and manufacturing facilities requiring precise handling in limited space.

SPECIFICATION	REF	UNIT	VALUE
Battery type			Lead Acid/Li-ion
Battery nominal capacity		Ah	105
Battery voltage		V	48
Load capacity	Q	kg	1500
Load centre distance	c	mm	500
Service weight		kg	1790
Retracted mast height	h_1	mm	1760
Lift height	h_3	mm	2490
Height, mast extended	h_4	mm	2975
Overall length		mm	2405/2808
Overall width	b_1/b_2	mm	1000
Length to face of forks	l ₂	mm	1335/1738
Fork dimensions	s/e/l	mm	40/100/1070
Turning radius		Wa	1710/2106
Operator type			Stand-on/Pedestrian
Load distance, centre of drive axle to fork		mm	368

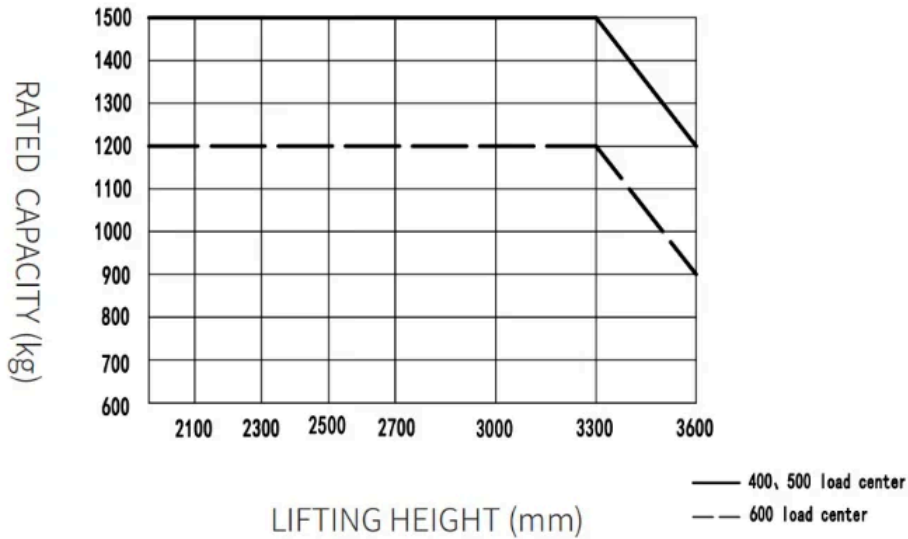
VDI Chart

	SPECIFICATION	REF	UNIT	VALUE
1.4	Operator type			Stand-on/Pedestrian
1.5	Load capacity	Q	kg	1500
1.6	Load centre distance	c	mm	500
1.8	Load distance, centre of drive axle to fork		mm	368
1.9	Wheelbase		mm	1395
2.1	Service weight		kg	1790
2.2	Axle loading, laden front/rear		kg	330/2960
2.3	Axle loading, unladen front/rear		kg	1240/550
3.1	Tyre type			Polyurethane
3.2.1	Tyre size, front		mm	Φ300x90
3.3.1	Tyre size, rear		mm	Φ254×102
3.4	Additional wheels (castor wheels)		mm	Φ130×55
3.5	Wheels, number front/rear (x=drive wheels)			1x , 2/2
3.6.1	Tread width, front	b ₁₀	mm	690
3.7.1	Tread width, rear	b ₁₁	mm	894
4.0	Max lift height	H	mm	2490
4.10	Height of wheel arms		mm	276
4.18	Width of loading surface			705
4.19	Overall length		mm	2405/2808
4.2	Retracted mast height	h ₁	mm	1760
4.2.1	Overall height			2975
4.20	Length to face of forks	l ₂	mm	1335/1738
4.21	Overall width	b ₁ /b ₂	mm	1000
4.22	Fork dimensions	s/e/l	mm	40/100/1070
4.23	A,B Fork carriage class/type A, B			2A
4.24	Fork carriage width		mm	705
4.26	Distance between wheel arms/loading surfaces			688
4.31	Ground clearance, laden, below mast		mm	90
4.32	Ground clearance, centre of wheelbase		mm	85
4.34.1	Aisle width for pallets 1000×1200 crossways		Ast	2781/3177
4.34.2	Aisle width for pallets 800×1200 lengthways		Ast	2833/3229
4.35	Turning radius		Wa	1710/2106

	SPECIFICATION	REF	UNIT	VALUE
4.4	Lift height	h ₃	mm	2490
4.5	Height, mast extended	h ₄	mm	2975
4.8	Seat height/standing height		mm	190
5.1	Travel speed, laden/unladen		km/h	4.5/5.0
5.10	Service brake			Electromagnetic
5.11	Parking brake			Electromagnetic
5.2	Lifting speed, laden/unladen		m/s	0.09/0.13
5.3	Lowering speed, laden/unladen		m/s	0.11/0.11
5.8	Max. gradeability, laden/unladen		%	5/8
6.1	Drive motor rating S2 60 min		kW	1.8
6.2	Lift motor rating at S3 15%		kW	2.2
6.4	Battery nominal capacity		Ah	105
6.4	Battery voltage		V	48
6.4.1	Battery type			Lead Acid/Li-ion
6.5	Battery weight		kg	122
8.1	Type of drive control			DC
10.5	Steering design			Mechanical
10.7	Sound pressure level at the drivers ear		dB(A)	74
15.1	Charger output current		A	15



RATED CAPACITIES GRAPH



Mast Options

MAST TYPE	LIFT HEIGHT (H3, MM)	MAST LOWERED HEIGHT (H1, MM)	HEIGHT, MAST EXTENDED, NO SHELVING (H4, MM)
2-Wide Mast	2490	1760	2975
2-Wide Mast	2690	1860	3175
2-Wide Mast	2990	2010	3475
2-Wide Mast	3290	2160	3775
2-Wide Mast	3590	2310	4075

Options

ITEM	OPTIONS (optional items marked in yellow)
Fork dimension	900*600、2A、100*40*1070 900*600、2A、100*40*1150 900*600、2A、100*40*1220
Load wheel material	PU
Drive wheel material	PU
Front wheel type	Single
Front wheel material	Single

ITEM	OPTIONS (optional items marked in yellow)
Battery capacity	48V/105Ah (Li-ion) 48V/125Ah (Lead-acid)
Charger	48V-15A External charger
Battery display indicator (BDI)	With hourmeter
Castor wheels	Yes and not customized
Hydraulic control	Mechanical lever